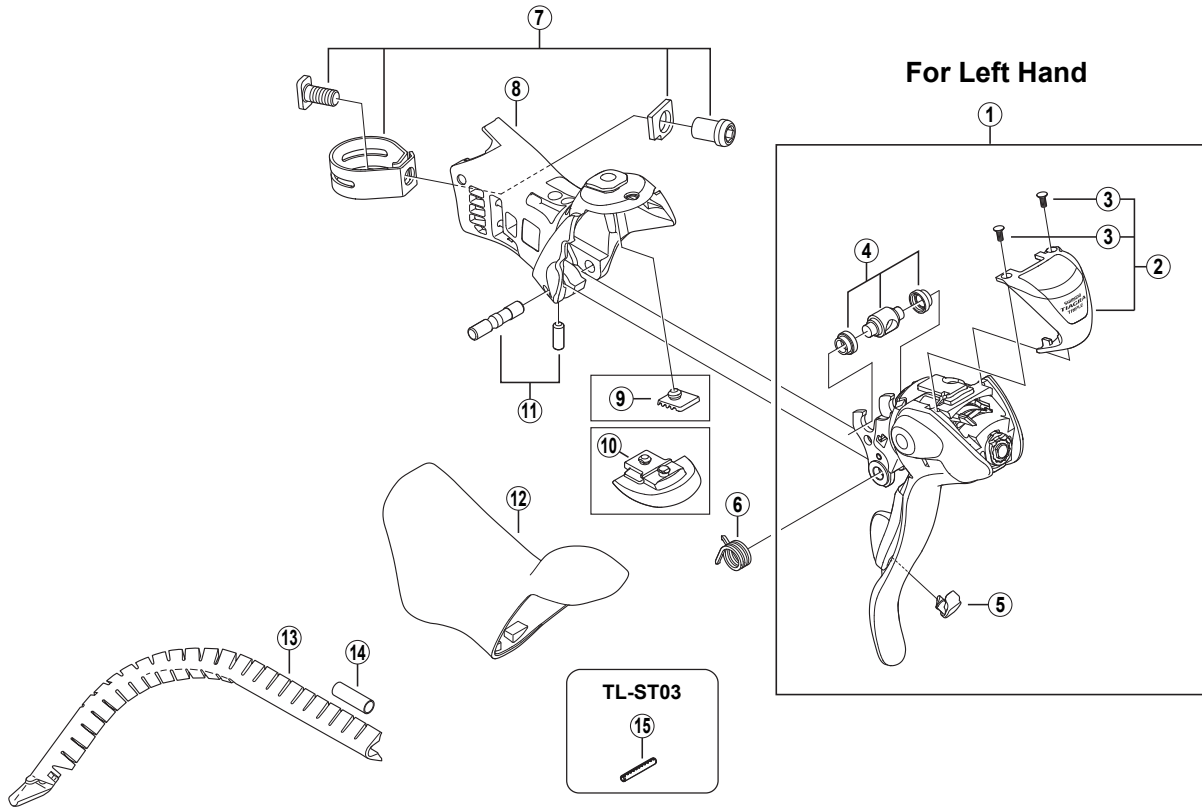


TIAGRA Dual Control Lever

ST-4503 For Triple Gear



ST-5603

ITEM NO.	SHIMANO CODE NO.	DESCRIPTION	INTERCHANGEABILITY
1	Y-6T0 98010	L.H. Main Lever Assembly	
2	Y-6T0 98020	L.H. Name Plate & Fixing Screws	
3	Y-66L 07010	Name Plate Fixing Screw	
4	Y-6CU98050	Cable Hook Unit	
5	Y-6KD55000	L.H. Release Lever Support	
6	Y-6K2 87100	L.H. Return Spring	A
7	Y-6K2 98060	Clamp Band Unit ($\phi 23.8$ mm — $\phi 24.2$ mm)	
8	Y-6T0 98040	L.H. Bracket	
9	Y-6K2 50010	Bump Rubber	A
10	Y-6LP 87010	L.H. Adjustment Block (8°)	
	Y-6LP 86010	L.H. Adjustment Block (4°)	
11	Y-6KD98060	Lever Axle & Fixing Screw	A
12	Y-6LP 88010	L.H. Bracket Cover	
13	Y-86B 90010	Outer Cable Guide	A
14	Y-877 11000	Outer Cable Joint	A
15	Y-130 03200	Return Spring Installation Tool (TL-ST03)	A

A: Same parts.

B: Parts are usable, but differ in materials, appearance, finish, size, etc.

Absence of mark indicates non-interchangeability.

0904-2949

Specifications are subject to change without notice.

SHIMANO