

General Safety Information

WARNING

– To avoid serious injuries:

- Obtain and read the service instructions carefully prior to installing the parts. Loose, worn or damaged parts may cause the bicycle to fall over and serious injury may occur as a result. We strongly recommend only using genuine Shimano replacement parts.
- Read these Technical Service Instructions carefully, and keep them in a safe place for later reference.

Note

- For smooth operation, use the specified outer casing and bottom bracket cable guide.
- Because the high cable resistance of a frame with internal cable routing would impair the SIS function, this type of frame should not be used.
- The sliding surfaces of the inner cable and outer casing should be greased before use.
- Operation of the levers related to gear shifting should be made only when the front chainwheel is turning.
- Parts are not guaranteed against natural wear or deterioration resulting from normal use.
- For any questions regarding methods of handling or maintenance, please contact the place of purchase.

Technical Service Instructions

SI-6RN0A-001

SL-7900

Shifting Lever

SHIMANO

SHIMANO AMERICAN CORPORATION
One Holland, Irvine, California 92618, U.S.A. Phone: +1-949-951-5003

SHIMANO EUROPE B.V.
Industrieweg 24, 8071 CT Nunspeet, The Netherlands Phone: +31-341-272222

SHIMANO INC.
3-77 Oimatsu-cho, Sakai-ku, Sakai-shi, Osaka 590-8577, Japan

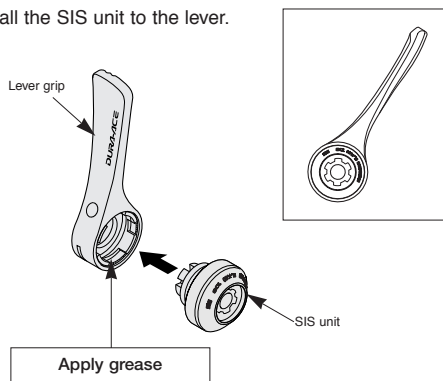
Please note: specifications are subject to change for improvement without notice. (English)
© May 2008 by Shimano Inc. XBC SZK Printed in Japan.

In order to realize the best performance, we recommend that the following combination be used.

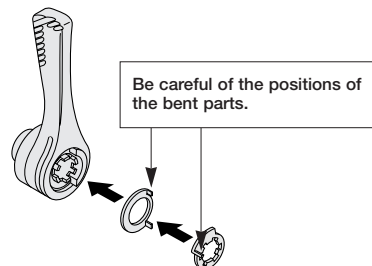
Series	DURA-ACE
Shifting lever	SL7900
Rear derailleur	RD-7900
Front derailleur	FD-7900
Outer casing	SP41 sealed outer casing
Inner cable	1.2 mm dia. (stainless steel)
Bottom bracket guide	SM-SP17
Sprockets	10

Installation of the lever (for rear)

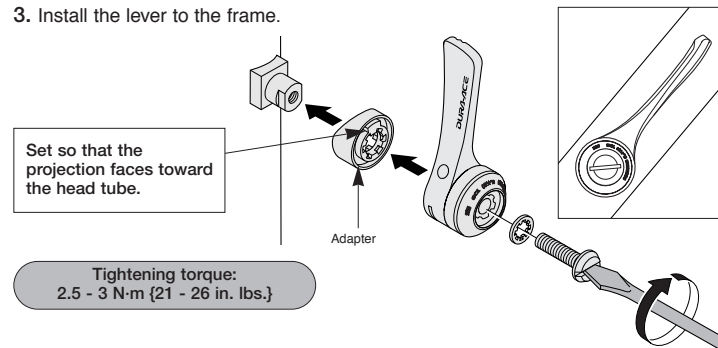
1. Install the SIS unit to the lever.



2. Install the two types of washer as shown in the illustration. (The illustration shows the lever as seen from behind.)

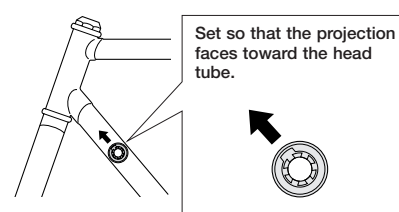


3. Install the lever to the frame.

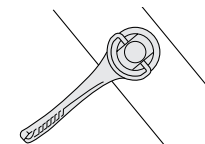


Installation of the lever (for front)

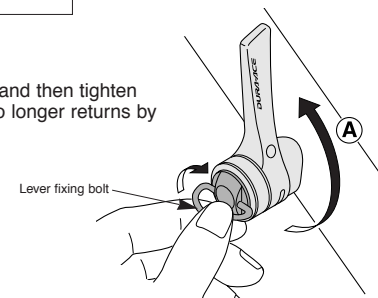
1. Install the lever boss cover to the brazed-on boss.



2. Install the lever.



3. Turn the lever in the direction of (A) and then tighten the lever fixing bolt until the lever no longer returns by the force of the spring.



Note:

- Be sure to turn the lever in the direction of (A). If it is turned in the opposite direction, the internal mechanism may become broken.
- In order to improve operability, the front lever is designed so that there is a 30° rise from the frame when the lever is moved to the low position.

