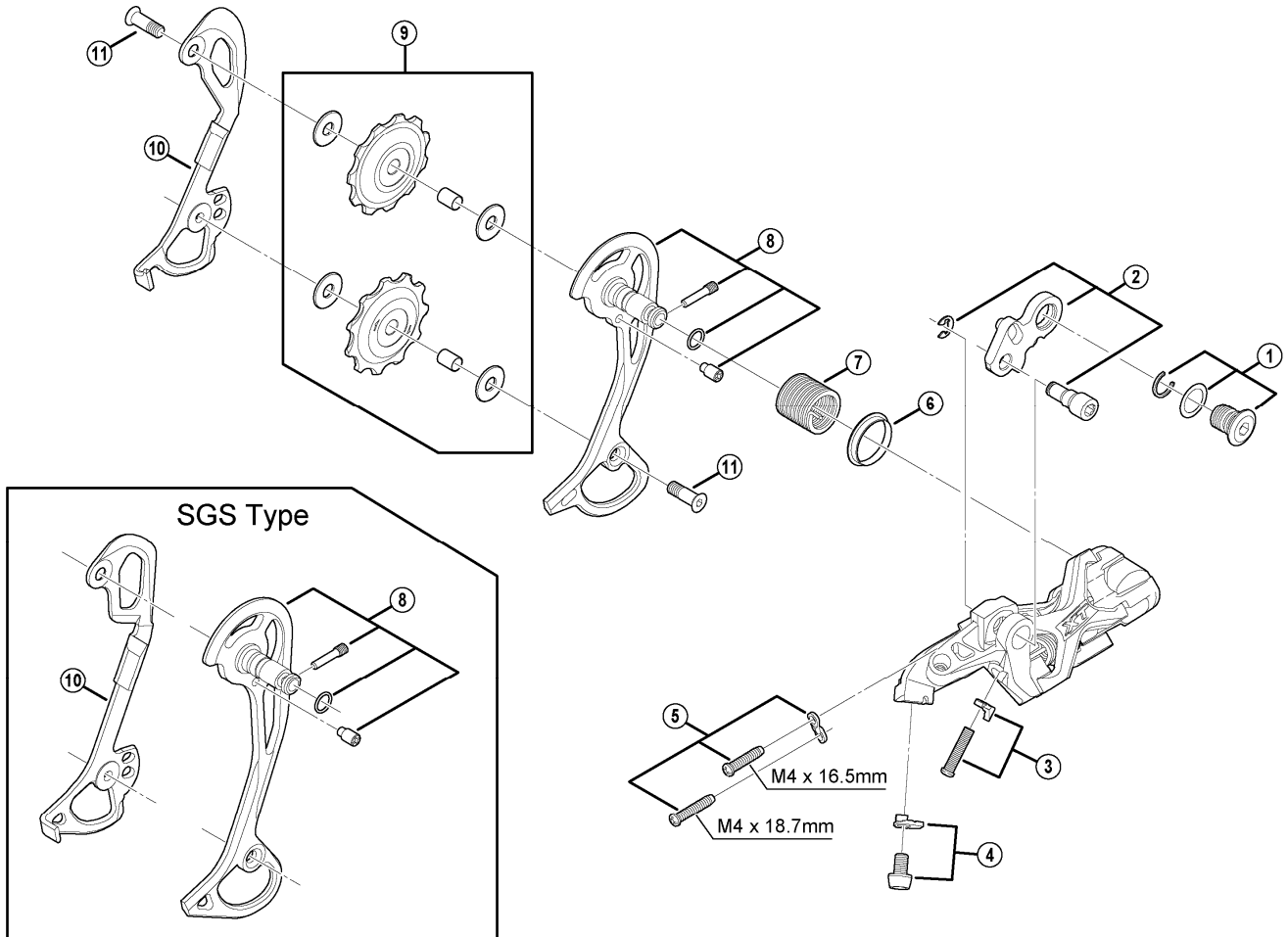


DEORE XT Rear Derailleur

RD-M773 (GS) Long Cage

RD-M773 (SGS) Super Long Cage



RD-M972
RD-M772
RD-M663

| ITEM NO. | SHIMANO CODE NO. | DESCRIPTION | INTERCHANGEABILITY | | |
|----------|------------------|---|--------------------|---------|---------|
| | | | RD-M972 | RD-M772 | RD-M663 |
| 1 | Y5XF98010 | B-Axle Assembly | | A | A |
| 2 | Y5XF98020 | Bracket Axle Unit | | A | A |
| 3 | Y5XF98030 | B-Tension Adjusting Screw (M4 x 18) & Plate | | | A |
| 4 | Y5W798030 | Cable Fixing Bolt (M5 x 8) & Plate | | A | A |
| 5 | Y5W798020 | Stroke Adjusting Screws & Plate | B | A | A |
| 6 | Y5UC14000 | P-Seal Ring | A | A | A |
| 7 | Y5W722000 | P-Tension Spring | | A | A |
| 8 | Y5W798040 | Outer Plate Assembly (GS-Type) | | A | |
| | Y5XF98040 | Outer Plate Assembly (SGS-Type) | | | B |
| 9 | Y5XF98060 | Guide & Tension Pulley Unit | | | B |
| 10 | Y5XF09000 | Inner Plate (GS-Type) | | | |
| | Y5XF10000 | Inner Plate (SGS-Type) | | | |
| 11 | Y53M24400 | Pulley Bolt (M5 x13.95) | B | A | |

A: Same parts.

B: Parts are usable, but differ in materials, appearance, finish, size, etc.

Absence of mark indicates non-interchangeability.

Mar.-2010-3038

© Shimano Inc. A

Specifications are subject to change without notice.

SHIMANO